

Faxes

Operation manual for log conveyor 100, 200 mm



**Read all instructions before using the log conveyor,
especially safety instructions.**

Faxes Fabriks AB
Hestravägen 7
330 26 Burseryd
Tel +46 (0)371-500 08

Contents

	sida
Company Presentation	2
Product Presentation	2
Symbol explanations	2
Security	3
Operation	4
Supplied/attached parts	5
Mounting model 100 mm	5-8,12-13
Mounting model 200 mm	5, 9-13
Assembly conveyor belt	12
Start and stop	13
Adjustment conveyor belt	13
Troubleshoot/maintenance	14
Technical Data	15
EU certificate of conformity	15

Company Presentation

Faxes Fabriks AB is a family owned business, established 1910th. The production of firewood machines is now in the third generation. It is located in Västbo often referred Gnosjö region. Sweden's most industrialized area.

We appreciate your confidence of buying a Faxes machine, and wish you good work with your new log conveyor.

Product Presentation

The log conveyor is designed to withstand the stresses and demands that professional woodhandling requires. The conveyors are made of sheet metal and they are driven by a worm gear of high quality in the upper part. The stabilizers have a broad base for good stability.

Symbol explanations

Symbol Explanation

Please read carefully the following sections.



WARNING! Wood conveyors can cause personal injury.



WARNING! Moving conveyor band. May cause pinching!



WARNING! High voltage!



Wear protection gloves.



Wear safety shoes.



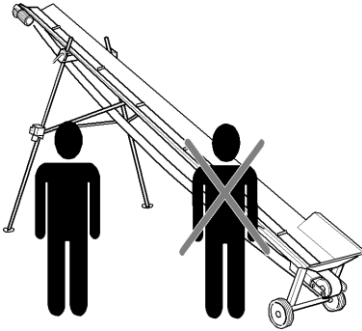
The CE label indicates that the machine is CE certified.

SECURITY



WARNING

The log conveyor may be used only in the manner prescribed in this manual. The user of the machine is responsible for ensuring that the instructions are read and followed. To avoid misunderstandings, the machine must only be operated by one person! In the danger area 2m around the machine, only operator is allowed to stay.



Machine safety



WARNING!

It is forbidden to remove the machine's warning signs and safety equipment. The machine must not be modified or rebuilt

The log conveyor may only be used to transport wood. Any other use is not permitted.

Never walk under the machine when it's working. WARNING for falling objects



WARNING Risk of pinching.

Do not clean the conveyor belt, when the machine is running.

Always handle the machine with great care.

Personal safety



When working with the logconveyor, wear gloves and safety shoes.

Noise: Sound pressure level at operation's place 71 dB(A).

Operation

The machine must be set on a flat, stable surface

Keep good work around machinery, so you don't risk falling on pieces of wood or other waste lying on the ground.



Always check before use that the cables and power plugs not are damaged.

The machine must only be connected to three-phase 400V power outlet.

If the conveyor belt runs in the wrong direction, the direction must immediately be changed. (Se page 13).

Moving short distances

The log conveyor is equipped with two transport wheels, which makes it easy to move. Lift the support legs in the opposite end, where the wheels are located, and the log conveyor can then be rolled on the wheels.

Do not move the machine with the electrical motor is running!



FORBIDDEN to use log conveyoyr with defective or removed security features. ALWAYS SWITCH OFF the log conveyor when you leave.

The log conveyor should be positioned next to the machine it will serve (woodsaw, log splitter), in such way to prevent the dangerous work of the other machines.

Pay close attention to the safety instructions that you find under the heading **SECURITY** on page 3.

General safety

- The log conveyor can be used only by adults who are familiar with the machine's functioning and well aware of the security measures described. It must not be handled by more than one person at a time
- Do not wear loose clothes or jewelry, wristwatches, etc. when working with the log splitter. These can be trapped or hooked up in the wood, or any machine part with a serious injury as a result.
- Always check that the wood is free from objects that could damage your machine or cause personal injury.

Storage of machinery

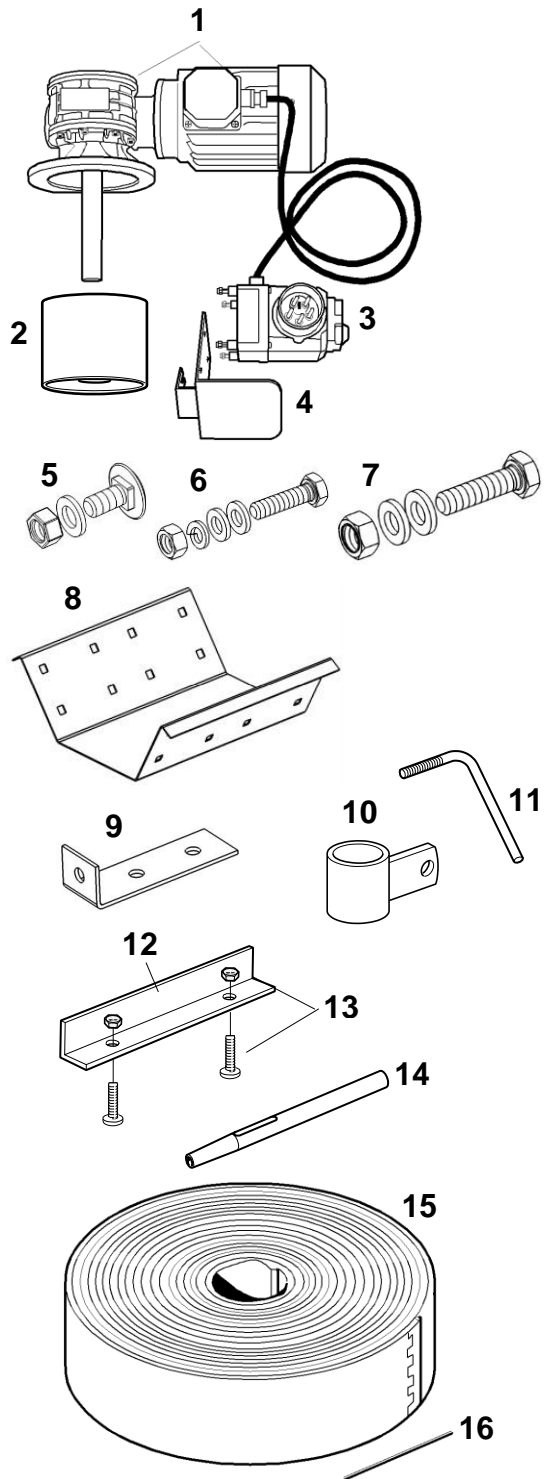
When not in use, the machine should be stored under roof or be well covered with crimps. Parts not rust protected can be protected with oil or rust preventive.

Delivery

The box that comes with delivery shall include the following elements:

Other (big) parts, like support legs and rods are packed along the sheet metal profiles of the conveyor.

1. 1 pc. Worm gear motor with drive shaft.
2. 1 pc. Conveyor belt roller.
3. 1 pc. Starting device with cable mounted
And 4 pc of nuts and washers. (Not on the 220 V versions)
4. 1 pc. Bracket for starting device.
5. 16 pc. Carriage bolt M8x16. For sheet metal profiles/sections.
6. Model 5,0 m-100 mm: 4 pc M8x30
Model 5,0 m-200 mm: 6 pc M8x30
7. 4 pc. M10x30 for support legs
8. 1 pc. Galvanized plate for join the conveyor sections.
9. 2 pc. Galvanized bracket for stays.
10. 2 pc. Galvanized sockets with bracket for assembly of the support legs.
11. 2 pc. Lock levers for support legs.
12. 12 pc. Galvanized flanges for mounting on the conveyor belt.
(Not for Model 200 mm.)
13. 24 pc. Screw M5x25 with nut for mounting of the flanges on the conveyor belt. (Not on Model 200mm).
14. 1 pc. Hole cutter, used to make holes in the conveyor belt when mounting the flanges.
15. 1 pc. Conveyor belt
16. 1 pc. Sprint to join the conveyor belt.



Mounting conveyor belt width 100 mm

Put the conveyor sections up and down on some support or trestles.

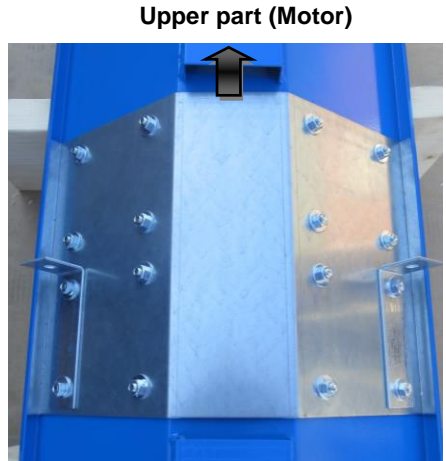


Screw the galvanized plate [8] with the first 12 carriage bolts [5] as illustrated. Make sure that the sections are smooth against each other and then tighten the screws



Lower part

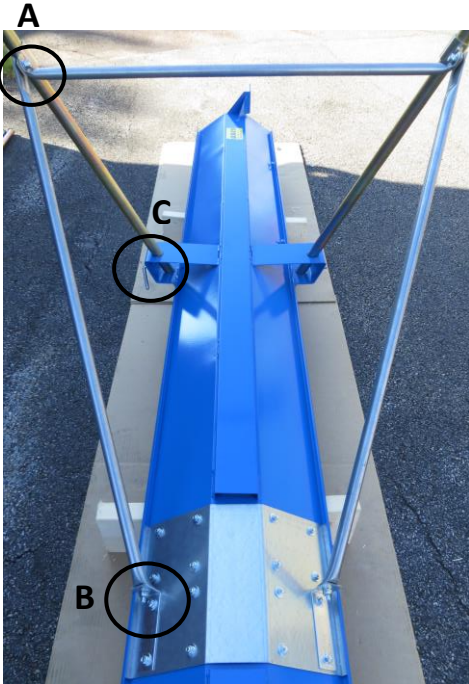
Screw the galvanized brackets [9] exactly as illustrated below with the remaining 4 carriage bolts [5] and tighten.



Lower part

Mounting conveyor belt width 100 mm

Mount the support legs with the three stays and put the socket [10] on the support legs.



Tighten the other side of the stay against the bracket with screw [7] (M10x30).

B



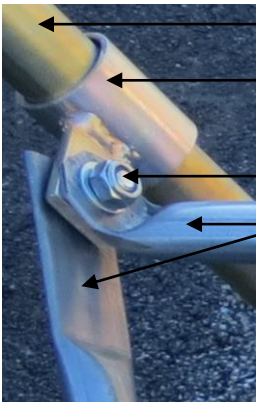
Tighten the lock levers [11] for the support leg. Those lock levers will lock the height of the conveyor and must be released when the height should be changed.

C



Tighten the stays against the socket [10] with the screws [7] (M10x30).

A



Supportleg

Socket [10]

Screw [7]

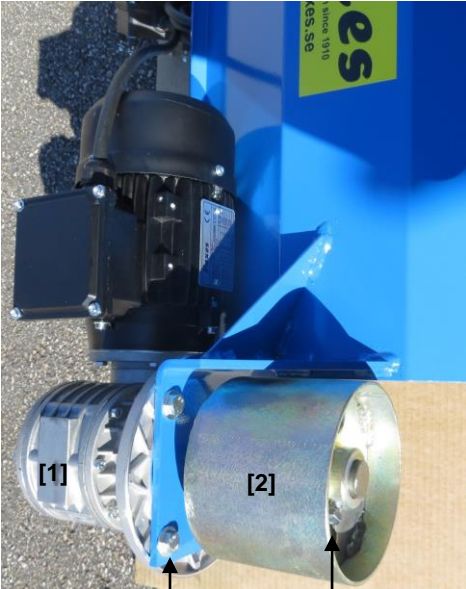
Stays

Locklever [11]

Mounting conveyor belt width 100 mm

Mount the wormgear [1] on the bracket in the upper part of the conveyor. Use the screws [6] (M8x30 4x).

Then mount the conveyor belt roller [2] and tighten its screw.



Screw [6] (4x)

Tighten the belt roller

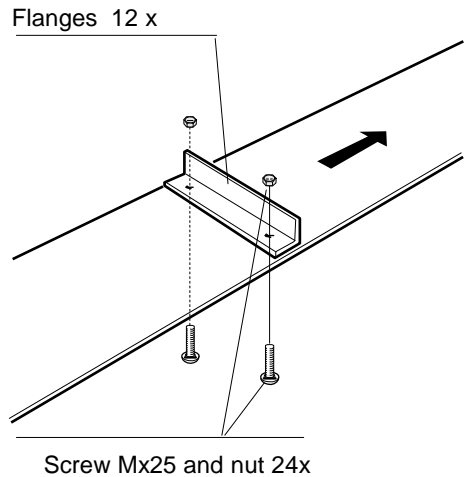
Be at least 2 persons and turn the whole conveyor to the right side. NOTE! Unlock both locking levers [11] on support legs so that the conveyor does not fall down.

Mounting of flanges of the conveyor band

Roll out the belt on a flat surface. Turn the fabric side up. Mark the holes with an awl, marker or similar. Use the flange, as a template. The distance between the flanges should be about 80 cm on the 5.0 m model and about 90 cm on the 7.5 m model.

Lay the conveyor belt on a firm surface such as a wooden plank. Make the holes in conveyor belt with the hole-cutter [14].

The flanges [12] are fixed with screw and nuts [13] (M5x25). The ribbed side (upper side) is showing the bands moving direction.



Go to page 12

Mounting conveyor belt width 200 mm

Put the conveyor sections up and down on some support or trestles.



Screw the galvanized plate [8] with the first 12 carriage bolts [5] as illustrated. Make sure that the sections are smooth against each other and then tighten the screws.

Upper part (Motor)



Lower part

Screw the galvanized brackets [9] exactly as illustrated below with the remaining 4 carriage bolts [5] and tighten.

Upper part (Motor)

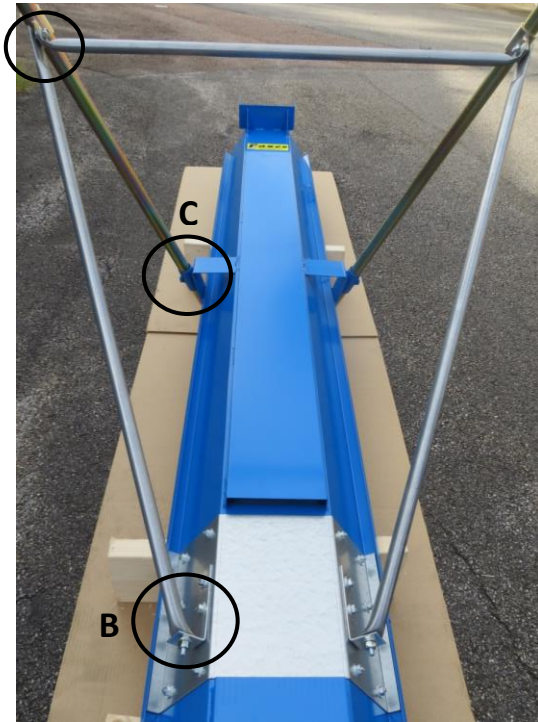


Lower part

Mounting conveyor belt width 200 mm

Mount the support legs with the three stays and put the socket [10] on the support legs.

A



Tighten the other side of the stay against the bracket with screw [7] (M10x30).

B



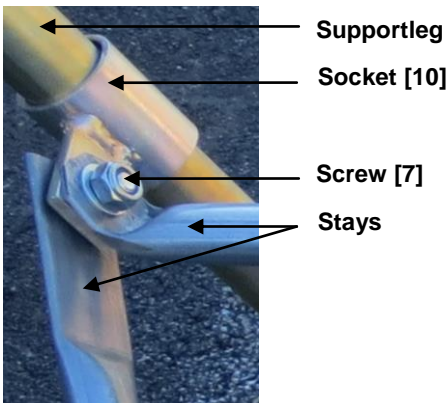
Tighten the lock levers [11] for the support leg. Those lock levers will lock the height of the conveyor and must be released when the height should be changed.

C



Tighten the stays against the socket [10] with the screws [7] (M10x30).

A



Locklever [11]

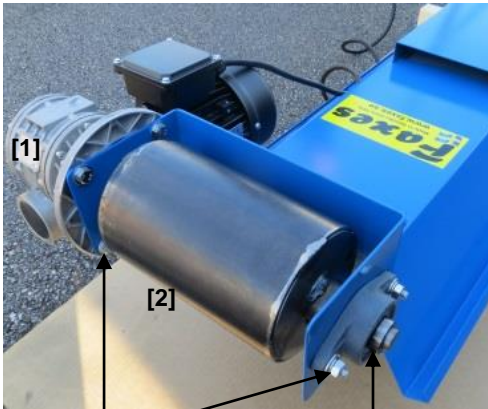
Mounting conveyor belt width 200 mm

Put the wormgear [1] on its place and then press/move the belt roll [2] on the shaft of the wormgear. Use a little bit grease if it's difficult.

Then tighten the screws [6] (M8x30 6x) to fix the wormgear and the support bearing.

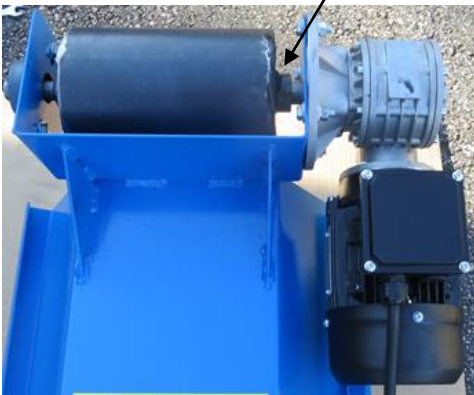
Continue with tightening the Allen screws on the belt roll and support bearing.

Be at least 2 persons and turn the whole conveyor to the right side. NOTE! Unlock both locking levers [11] on support legs so that the conveyor does not fall down.



Screw [6] 6x

Allen screws



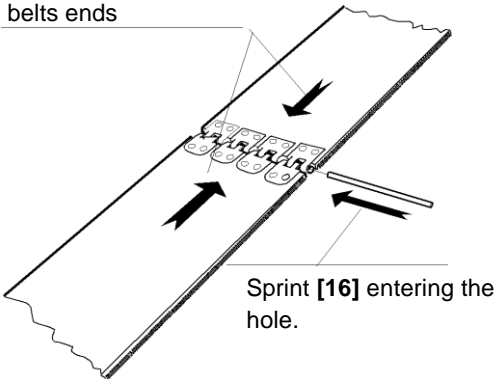
Joining conveyor belt

The conveyor band is placed on the sheet metal profile with the ribbed rubber side up. The band is then placed over the rollers of the sheet metal profiles both ends.

Merge the conveyor belts ends together, under sheet metal profile, as shown. Entering the hole opening (that is formed when the ends are brought together) with sprint [16].

Note! If the belt is difficult to join together you can loosen the bottom roll with a screw. The belt then becomes slack (see page 13).

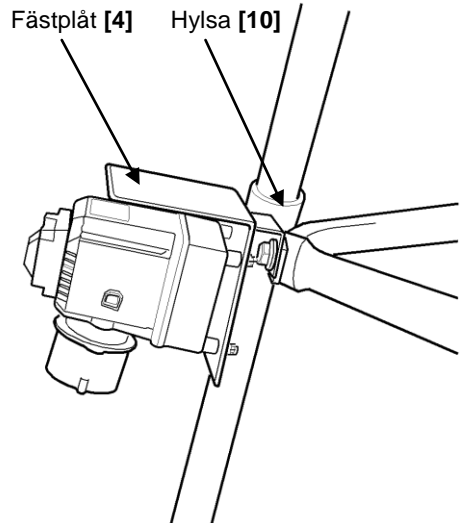
Joining the conveyor-belts ends



Mounting the starting device

The bracket for the starting device [4] should be screwed on the socket [10]. The bracket has a trace which makes it easy to attach to the screw which fixating the stays and support leg.

The starting device could now be mounted on the bracket with the four nuts. (Those nuts are already mounted on the backside of the starting device.)



Montage

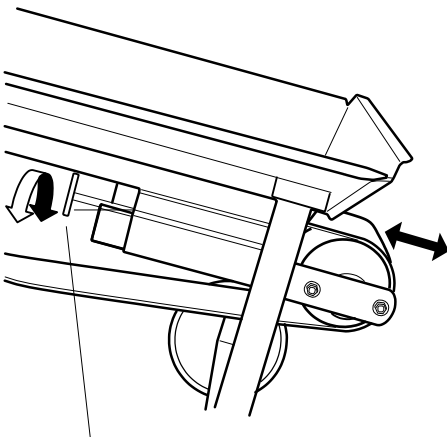
Tightening of the conveyor belt

When the belt is fitted, the belt should be stretched slightly. The knob to stretch the belt is placed under the sheet metal profile. (See picture below)

Right tension is when the belt "hanging down" around. 30 cm below the sheet metal profile, measured from the middle. Note Do not tension the belt too hard.

Check belt tension every now and then during operation.

For longer storage of the conveyor, you should slack the belt slightly.



The screw to adjust the tension of the conveyor belt.

Start and Stop

The log conveyor has a starter with built-in motor protection. (Not on the 220V-model).

Start the log conveyor with the green start button

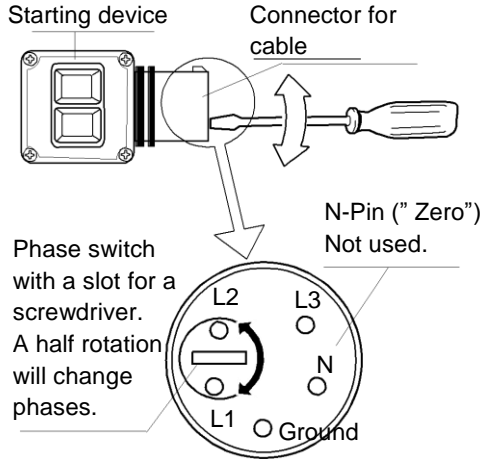
Stop the log conveyor with the raised red button.

If the conveyor belt is going backwards, the motor needs changed direction of rotation.

This is done on phase switch on the connector.

Phase switch

In order to change the motor rotation the Phase switch needs to be rotated a half turn. (See Figure)



Connect the connector to the 3-phase 400V

Troubleshooting

Faults	Probable cause	Action
The belt goes in the wrong direction	Phases wrong in electric motor	Change phases in the starting device, see page 13.
The conveyor doesn't start	Faults on the power source	Measure the voltage, check the fuses. Check cable. Try another outlet.

Maintenance

For longer storage of the conveyor, you should slack the belt slightly. (See page 13.)

Try to storage the conveyor under a shelter or a roof. This increase the lifetime of the machine.

Lubricate the bearings and tensioning device if necessary.



Technical data

Technical data	100 mm	200 mm
Length	5000 mm	5000 mm
Belt width	100 mm	100 mm
Max. height	3000 mm	3000 mm
Min. height	1500 mm	1500 mm
Throw in height	500 mm	300 mm
Throw out height	550 mm	550 mm
Wormgear motor	0,37 kW	0,37 kW
Speed of belt	0,6 m/s	0,6 m/s
Weight netto	90 kg	120 kg
Power	3-fas 400V	3-fas 400V

Certificate of conformity

Faxes Fabriks AB
S-330 26 Burseryd
Tel +46(0) 371-500 08
Fax +46(0) 371-500 48
www.faxes.se

We hereby certify that this product:
Type: Log conveyor 100, 200

Conforms to the following directives and standards.
AFS 1994:48
ELSÄK-FS 1994:9

Directives:
Machinery Directive 89/392/EEG, 91/368/EEG
Low Voltage Directive 73/23/EEG, 93/68/EEG

Burseryd 2015 06 31



Lars Davidsson, VD

Faxes



Model 100 mm [5,0 m]



Model 200 mm [5,0 m]

Faxes Fabriks AB
330 26 Burseryd
Tel. +46(0) 371-500 08
Fax. +46(0) 371-500 48